

Research of Fast Electrons Flow Generation with a Help of Laser Plume

V.V. Lisenkov, V.V. Osipov, D.S. Mastjugin, V.I. Solomonov

*Institute of electrophysics UD RAS, Amundsena st., 106, Ekaterinburg, 620016, Russia,
Phone: (343)2678779, Fax: (343)2678794, E-mail: lisenkov@iep.uran.ru*

Abstract – The paper presents the results of our investigations of fast electron beam generation in high-temperature plasma of a laser plume and further acceleration of electrons in atmosphere. Results of calculations have shown an opportunity of generation of fast beam with a current in a range $\sim 10^2$ – 10^3 A from the laser plume with the length of 5 mm and the area of 0.1 mm². The preliminary experiments carried out by us have shown correctness of the chosen direction.

1. Introduction

As is known, the effect of fast electrons generation in high pressure gas media was discovered more than 30 years ago. However, for this days it has not found a serious application because of low efficiency of fast electrons output in atmospheric air.

The current state of this problem is described in detail in review papers [1, 2]. Here we should note, that the basic problem is a requirement of high E/N (E – electric field strength, N – number density of gas molecules) applying for transition of noticeable part of electrons into continuous acceleration (runaway or escape) mode. The required high values of E/N ($\sim 10^5$ – 10^6 V/(cm atm) or 10^3 – 10^4 Td) could be realized only in areas of electric field amplification, for example, in front of a spark channel, near a cathode of special shape, etc., at mean electric fields $< 10^3$ Td.

The characteristic time of breakdown of a discharge gap in such conditions lays in nanosecond and sub nanosecond range and decreases with growth of E . Hence, a voltage rise time (τ) should not exceed a value $\sim 10^{-10}$ – 10^{-9} s.

Thus, a traditional way to solve the problem is to increase of E and decrease of τ , as necessary requirement.

Taking into account, that the part of escaping electrons is the function of E/N , we suggest to increase this parameter not by increasing E , but with a help of decreasing N , by making high-temperature area near the cathode.

Such area can be, for example, a laser plume or a spark channel, which finished their thermal expansion.

For the theoretical analysis of the suggested approach we worked out the one-dimension numerical

model consisting of the system of balance equations for slow and fast electrons, ions, and Poisson equation. The kinetic coefficients as function of electric field, including the probability of transition of electrons into escape mode, were received as a result of modeling of electron motion by Monte-Carlo method.

We made a test calculations for the conditions of experiment which was carried out recently in our institute with use of electron accelerator RADAN and the cathode as a thin-walled tube [3].

To avoid the solution of a two-dimensional problem, but at the same time to take into account the amplification of electric field near the tube cathode we took the results of numerical solution of the two-dimensional Laplace equation obtained by Yalandin with the help of program SAM [3]. The received amplification factor of electric field near the cathode was used in our one-dimensional calculations.

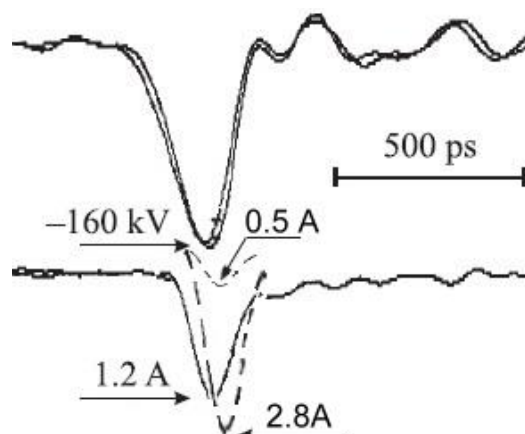


Fig. 1. Experimental oscillograms of voltage on the gap and a current of fast electrons (solid curves) [3] and calculated oscillograms of fast electron current (dash curves)

The calculated oscillograms of the fast electron current are put as dotted curves on experimental oscillogram from paper [3] (Fig. 1). The oscillograms with peak values of 2,8 A and 0,5 A were calculated for cases of presence and absence of 1 nanosecond pre-pulse (for details see [3]). They are in qualitatively agreement with the experimental results. In the case of pre-

pulse presence the peak current obtained in experiment was 1,2 A, and in the case of pre-pulse absence the current of fast electrons was not obtained.

According to our calculations, in this experiment the fast electron current was limited by small volume of area, where the conditions for runaway mode were realized. The area of generation of fast electrons can be essentially enlarged with a help of heated area of laser plume.

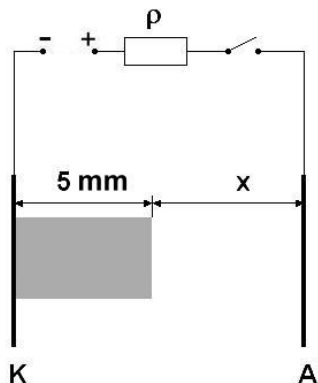


Fig. 2. Illustration of the numerical problem solved

For modeling of fast electron beam generation in heated area we solved the following problem (fig. 2). The discharge gap consisted of two areas. Area near cathode was the laser plume (marked by gray color) that was produced by laser radiation pulse from the graphite cathode. The plume had following parameters: length – 0,5 cm, area of 0,1 cm² temperature – equal to temperature of graphite sublimation (4500 K), concentration of neutral particles $N < 0,1 \cdot N_L$ (N_L – Loshmit number). Such parameters can be easily received with the help pulsed CO₂ the laser [4]. Between the laser plume and anode was the air gap ($N = N_L$) with varied length. For simplicity we supposed, that the rate of voltage rising was constant and was provided by properties of a key. The real forming line was conventionally exchanged with a chain, consisting of the power supply and the resistor which was equal to impedance of a line (50 Ω). Such approach is valid, while the wave of line discharge will not reach the edge of a line.

Calculated oscillograms of a voltage on a discharge gap and currents of plasma and fast electrons are shown on fig. 3. At the voltage of 100 kV the pulse of fast electrons current with duration of 0,2 nanoseconds and peak value of 400 A was obtained (fig. 3). At the voltage of 200 kV (fig. 4.) the peak value of fast electrons current pulse increased up to 1500 A at the same duration. Such sharp increasing was caused by increasing the efficiency of fast electrons generation with growth E.

However, the growth of applying voltage required the decrease of the rise voltage front (τ_r). For 100 kV $\tau_r^{\max} = 0,5$ nanoseconds, for 200 kV $\tau_r^{\max} = 0,3$ nanoseconds. If $\tau_r > \tau_r^{\max}$ it was impossible to apply the required voltage because of breakdown the gap.

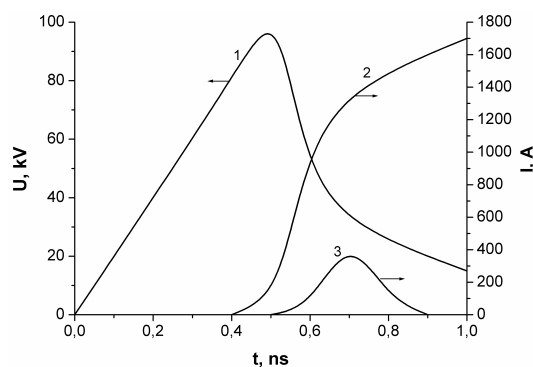


Fig. 3 Calculated oscillograms of voltage the gap (curve 1), currents of the discharge (slow electrons) (2) and fast electrons (3). The gap was 1 cm, peak voltage was 100 kV

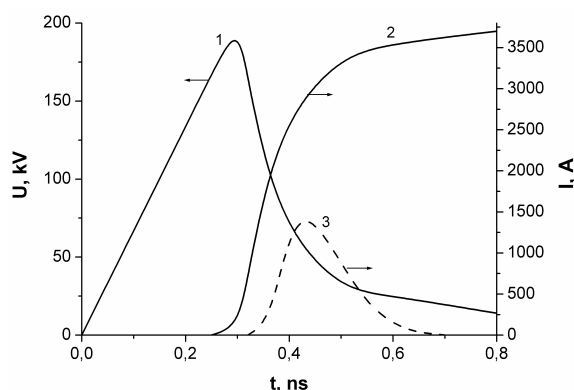


Fig. 4 Calculated oscillograms for peak voltage 200 kV. Notifications of curves are same as fig. 3

Another important characteristic of fast electron beam is an energy distribution function.

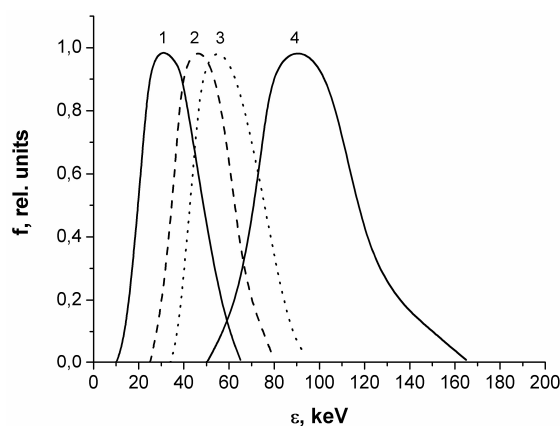


Fig. 5. Fast electron energy distributions. Curves 1, 2, 3 are corresponded to voltage 75, 100, 125 kV and to gap 0.75, 1.0, 1.25 cm. The curve 4 is corresponded to voltage 200 kV and to gap 1cm

The set of energy distribution functions presented on fig. 5 was calculated for various voltages on the gap. It is visible, that if the voltage grows with increasing of the gap so, the peak field strength in a gap have a stationary value (100 kV/cm), growth of medial energy fast electrons occurs inefficiently. At stage-by-

stage increasing of the voltage on 25 kV (75 kV, 100 kV, 125 kV) the maximum of energy distribution function was 32 keV (curve 1), 46 keV (curve 2), 55 keV (a curve 3) accordingly. It means, that the growth of energy of fast electrons decreased from 14 keV to 9 keV. More effective grows of fast electron energy provided by increasing the field strength in the gap. So for example the magnification of this parameter twice (from 100 up to 200 kV/cm) increased twice the energy of a maximum of a distribution function (46 keV, a curve 2 and 92 keV, a curve 4).

We tried to test experimentally the efficiency of suggested and theoretically proved method. The diagram of the experimental setup is given on fig. 6. The laser (1) generated a pulse with duration of 1ms and energy of 10 J which was focused by lens on surface of the graphite cathode (3). The diameter of cathode was 8 mm. The distance between the cathode and anode was 18 mm. The angle of the cathode edge was 45 and 20,5 degrees. It means that, the angle between axis of plasma plume (5) and mesh anode (4) was accordingly 45 and 20,5 degrees. Therefore, unfortunately, only the small area of the plume could be used for generation of fast electrons.

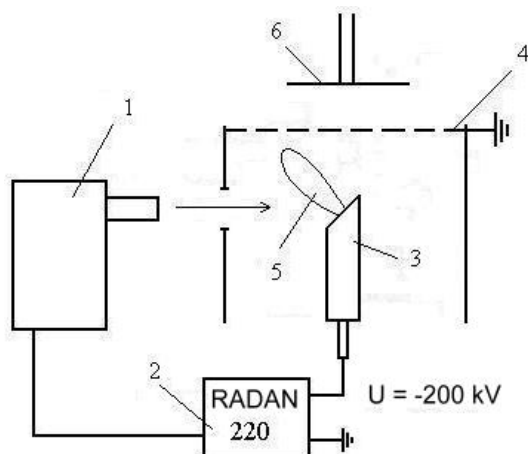


Fig. 6. The experimental setup. 1 – laser, 2 – RADAN, 3 – graphite cathode, 4 – anode, 5 – laser plume, 6 – current shunt

With a help of pulse power system RADAN (2), the high voltage pulse with amplitude of 200 kV and duration of 2ns was applied to the gap with 2–10 ms time-delay after laser pulse. Such delay is necessary for finishing the expansion of laser plume.

The electron beam accelerated into the gap further fell on the current shunt (6), which was on 10mm distance from the anode. The diameter of shunt was 42 mm. The voltage pulse on the shunt was measured by oscilloscope Tektronics TDS-360.

Experiments showed, that the amplitude of a voltage pulse on the shunt after laser impulse U_1 was es-

entially increased in comparison with amplitude in case of absence of laser pulse U_x . Dependence U_1/U_x on delay time between laser pulse and high voltage pulse for edge corners of the cathode of 20,5 and 45 degrees are shown on fig. 7. It is visible, that there is an optimum delay time at which the fast electron current becomes maximum value. Presence of delay time between peak value of fast electron current and laser pulse, and its dependence on angle of the cathode edge are caused, in our opinion, by dynamics of expansion of a laser plume.

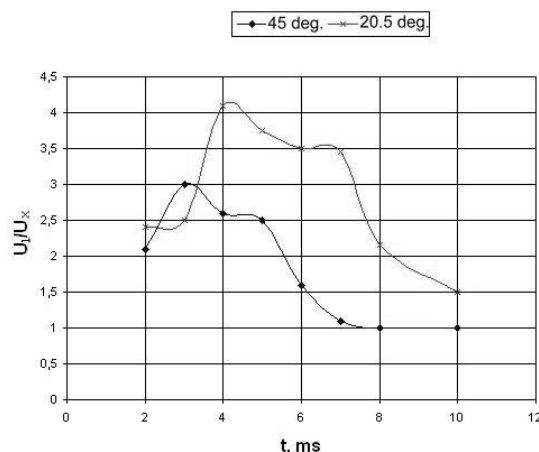


Fig. 7. Dependence U_1/U_x on delay time

We obtained the magnification of amplitude of a fast electron current more than in 4 times in comparison with absence of a laser impulse. According to our calculations the magnification of fast electron current should be much more than 4 times. This difference may be explained by angle between plasma plume axis and direction of fast electrons flow. Therefore, as we said above, only the small area of the plume was used for generation of fast electrons.

However, the experiment qualitatively confirms efficiency of suggested mechanism of fast electrons generation in air, and our calculations proved availability of its further research.

References

- [1] L.P. Babich, T.V. Looko, V.A. Tsukerman, *Sov. Phys. Usp.* 33, 27, (1990)
- [2] V.F. Tarasenko, S.I. Yakovlenko, *Physics-Uspekhi*, 47, 887, (2004)
- [3] G. A. Mesyats, S.D. Korovin, K.A. Sharypov, V.G. Shpak, S.A. Shunailov, M.I. Yalandin, *Technical Physics Letters*, 32, 18, (2006)
- [4] V.V. Osipov, V.I. Solomonov, V.V. Platonov, O.A. Snigireva, M.G. Ivanov, V.V. Lisenkov, *Quantum Electronics*, 35, 467, (2005)